

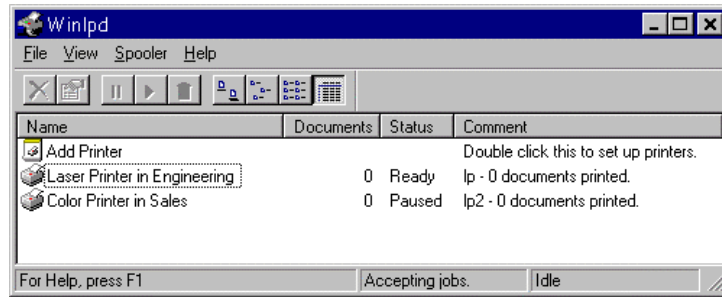
WINLPD 1.2

Winlpd is an LPD implementation for family of 32-bit Windows operating system. Winlpd includes a full-featured LPD server and an LPR client. Winlpd provides both printing to Unix or networked printers as well as printing from Unix machines to Windows printers.

HOW WINLPD WORKS

Winlpd's LPD server has an interface similar to the Printers folder in your Windows machine. Once the user has installed Winlpd application it starts automatically and keeps listening for requests from remote machines.

After you have installed a Windows printer from the control panel you have to use the "Add Printer" wizard to add any of the Windows printers to be shared using Winlpd. Once a printer is shared it appears inside the Winlpd window. Winlpd receives requests from other clients and hands it over to the Windows printer in raw format.



Winlpd can be configured after installation to run as a service on Windows 95, Windows 98 and Windows NT 4.0. This helps in making LPD services available even if there is no user logged in.

The LPR client in Winlpd provides LPR based printing to Windows from within Windows applications and also as a command line option.

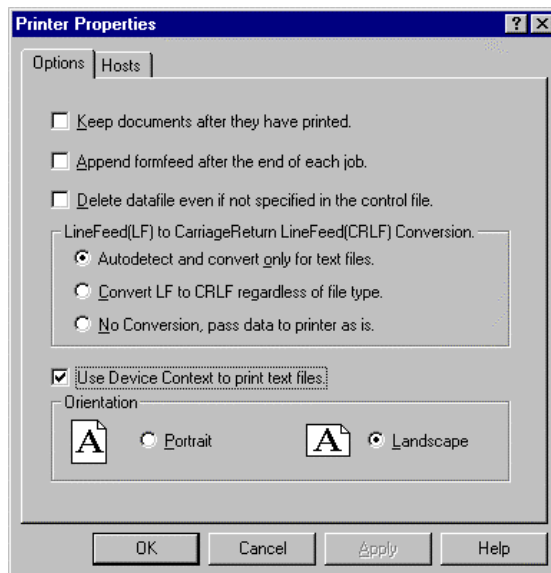
BENEFITS

- Share unlimited printers from a single PC.
- Share Windows 95, Windows 98 or Windows NT printers with UNIX users or with any host that supports the LPD/LPR protocol.

- Uses industry standard TCP/IP protocol and LPD/LPR protocol.
- Winlpd will save you enormous sum of money. No longer you need to purchase expensive network cards/network print servers.
- Its multithreaded architecture allows simultaneous access to printers without ever rejecting any print request.

FEATURES

- Print from Windows to network/Unix printers or print from Unix to Windows Printers.
- Easy 5 minute installation.
- Share either local or remote Windows printers. Can even print to Windows network printers.
- Any number of print queues can be set.
- Easy setup wizard allows you to quickly share Windows printers.
- Printer setup wizard allows you to print test page while setting up the printer.
- Winlpd is RFC 1179 compliant.
- Winlpd can run as a service in Windows 95/98 and on Windows NT 4.0. This helps in making LPD services available even if there is no user logged in.
- Winlpd can auto detect binary or text data and apply linefeed to carriage return linefeed conversion automatically.
- Portrait and Landscape print selection.



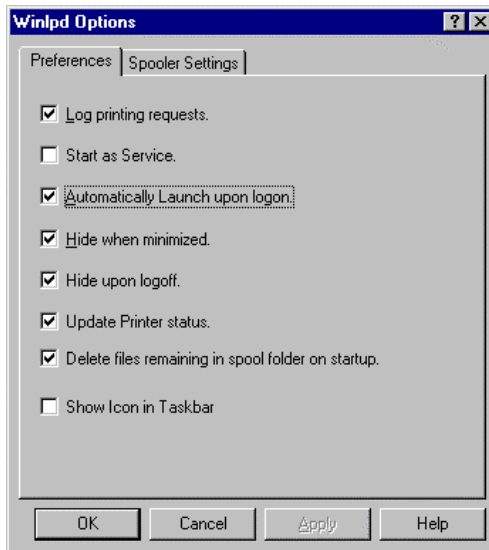
- Winlpd redirects print data through the Windows spooler. This allows you to print locally as well as from remote hosts simultaneously.
- Detailed logging of printing can be enabled for debugging any printing problems.
- Individual print queues can be set with their own settings.
- Print queue can be programmed to allow or deny print requests from specified hosts.
- Print queue can be configured to send form feed after each job.
- Winlpd status bar shows the

SYSTEM REQUIREMENTS

- Requires Windows 95, Windows 98 or Windows NT 4.0 operating system.
- Needs 2 Mbytes of disk space. (Additional space for spooling print files, is required depending upon your printing needs.)
- Requires 8MB of memory. Recommended 32MB of memory.
- Requires Winsock 1.1 compatible TCP/IP stack (Microsoft TCP/IP stack is recommended).
- Host (UNIX) requirements: Any

PRODUCT

Winlpd is available in the following license counts:
 Winlpd single PC license, 2-PC, 5-PC, 10-C, 25-PC, 50-PC, 100-PC, 250-PC, 500-PC, single-site UNLIMITED, and multi-site UNLIMITED.
 Printed manual is available for an additional charge.



- current state of the spooler.
- Supports printing using TCP port 9100.
- Winlpd is a multithreaded 32-bit program. This allows Winlpd to print heavy-duty jobs and also accept new jobs simultaneously in much more responsive manner.

UNIX or other host that supports LPD/LPR protocol. Supported UNIX systems: SCO UNIX, IBM AIX, HP/UX, DEC Ultrix, UnixWare, SUN OS, SUN Solaris, Data General, NCR, Unisys, AT&T, Silicon Graphics, Linux, ICL, Cray, Fujitsu, QNX, Motorola, Pyramid, Sequent, Stratus, Tandem, TI, AlphaMicro AMOS and Altos.

RABOX, INC.

1744 FUMIA DRIVE, SAN JOSE, CA 95131

☎+1(408) 573-7434, Fax: +1(408) 573-7462, info@rabox.com

<http://www.rabox.com>